

- 1
- 2
- 3
- 4
- 5
- 6
- 7
- 8
- 9
- 10
- 11
- 12
- 13
- 14
- 15
- 16
- 17
- 18
- 19

GOUJON
Acier zingué

DENTS DE FIXATION
Acier INOX AISI 304

RESSORT
Acier INOX AISI 301.

BOUTON
Technopolymère à base de polyamide (PA) renforcé de fibre de verre, couleur noire avec trous pour anneau d'accrochage.

BOUTON
Technopolymère à base de polyamide (PA), couleur rouge, finition brillante.

TEMPÉRATURE D'EXERCICE
De -20°C à +80°C.

CARACTÉRISTIQUES ET APPLICATIONS
Les broches à billes GN 114.2 sont généralement employés pour les fixations rapides entre des éléments en usinage en particulier quand les éléments de fixation doivent être fréquemment enlevés et remis en position.

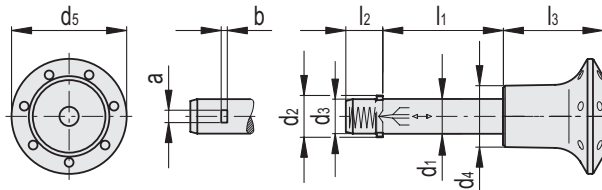
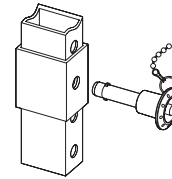
ACCESSOIRES
Pour optimiser l'emploi des goujons autobloquants GN 214.3 nous vous proposons:
- chaînettes à billes GN 111 (voir page 611);
- câbles de retenue GN 111.2 (voir page 612);
- câbles de retenue à spirale GN 111.4 (voir page 613).

EXÉCUTIONS SPÉCIALES SUR DEMANDE
Dimensions différentes.

INSTRUCTIONS D'EMPLOI
En appuyant sur le bouton les deux dents de fixation du goujon sont relâchées et permettent au goujon d'être inséré ou extrait.

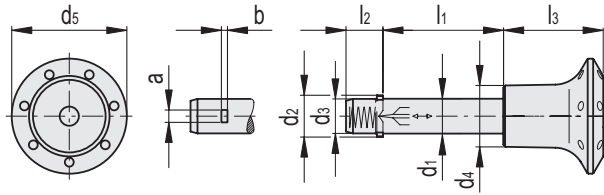


Exemple d'application



Code	Description	d1 -0.1	d2	d3	d4	d5	l1 +0.4	l2	l3	a	b	Résistance au cisaillement [KN]	
GN.38715	GN 114.2-6-10	6	7.3 +0.5	5.9	15	30	10	7	21	2.3	0.5	14	12
GN.78201	GN 114.2-6-12	6	7.3 +0.5	5.9	15	30	12	7	21	2.3	0.5	14	12
GN.38716	GN 114.2-6-16	6	7.3 +0.5	5.9	15	30	16	7	21	2.3	0.5	14	13
GN.38717	GN 114.2-6-20	6	7.3 +0.5	5.9	15	30	20	7	21	2.3	0.5	14	14
GN.38718	GN 114.2-6-25	6	7.3 +0.5	5.9	15	30	25	7	21	2.3	0.5	14	14
GN.38719	GN 114.2-6-30	6	7.3 +0.5	5.9	15	30	30	7	21	2.3	0.5	14	15
GN.78202	GN 114.2-6-35	6	7.3 +0.5	5.9	15	30	35	7	21	2.3	0.5	14	16
GN.38720	GN 114.2-6-40	6	7.3 +0.5	5.9	15	30	40	7	21	2.3	0.5	14	17
GN.78203	GN 114.2-6-45	6	7.3 +0.5	5.9	15	30	45	7	21	2.3	0.5	14	18
GN.78204	GN 114.2-6-50	6	7.3 +0.5	5.9	15	30	50	7	21	2.3	0.5	14	18
GN.78205	GN 114.2-6-60	6	7.3 +0.5	5.9	15	30	60	7	21	2.3	0.5	14	23
GN.78206	GN 114.2-6-70	6	7.3 +0.5	5.9	15	30	70	7	21	2.3	0.5	14	23
GN.78207	GN 114.2-6-80	6	7.3 +0.5	5.9	15	30	80	7	21	2.3	0.5	14	27
GN.78211	GN 114.2-8-10	8	9.8 +0.5	7.9	15	30	10	8.4	21	2.8	0.6	28	26
GN.78212	GN 114.2-8-16	8	9.8 +0.5	7.9	15	30	16	8.4	21	2.8	0.6	28	16
GN.38721	GN 114.2-8-20	8	9.8 +0.5	7.9	15	30	20	8.4	21	2.8	0.6	28	25
GN.38723	GN 114.2-8-25	8	9.8 +0.5	7.9	15	30	25	8.4	21	2.8	0.6	28	27
GN.38725	GN 114.2-8-30	8	9.8 +0.5	7.9	15	30	30	8.4	21	2.8	0.6	28	21
GN.78213	GN 114.2-8-35	8	9.8 +0.5	7.9	15	30	35	8.4	21	2.8	0.6	28	29
GN.38727	GN 114.2-8-40	8	9.8 +0.5	7.9	15	30	40	8.4	21	2.8	0.6	28	32
GN.78214	GN 114.2-8-45	8	9.8 +0.5	7.9	15	30	45	8.4	21	2.8	0.6	28	34
GN.38729	GN 114.2-8-50	8	9.8 +0.5	7.9	15	30	50	8.4	21	2.8	0.6	28	35
GN.78215	GN 114.2-8-60	8	9.8 +0.5	7.9	15	30	60	8.4	21	2.8	0.6	28	41
GN.78216	GN 114.2-8-70	8	9.8 +0.5	7.9	15	30	70	8.4	21	2.8	0.6	28	47
GN.78217	GN 114.2-8-80	8	9.8 +0.5	7.9	15	30	80	8.4	21	2.8	0.6	28	50
GN.78218	GN 114.2-8-90	8	9.8 +0.5	7.9	15	30	90	8.4	21	2.8	0.6	28	52
GN.78219	GN 114.2-8-100	8	9.8 +0.5	7.9	15	30	100	8.4	21	2.8	0.6	28	54

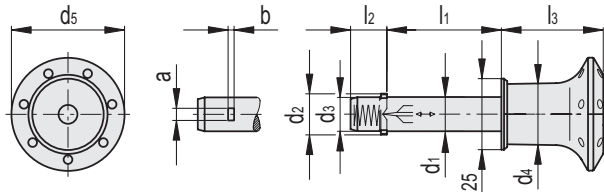
Éléments d'indexage



Code	Description	d1 -0.1	d2	d3	d4	d5	l1+0.4	l2	l3	a	b	Résistance au cisaillement [KN]	
GN.78231	GN 114.2-10-15	10	11.7 +1	9.9	18	34	15	9.8	26	3.3	1	38	24
GN.38731	GN 114.2-10-20	10	11.7 +1	9.9	18	34	20	9.8	26	3.3	1	38	26
GN.38733	GN 114.2-10-25	10	11.7 +1	9.9	18	34	25	9.8	26	3.3	1	38	28
GN.38735	GN 114.2-10-30	10	11.7 +1	9.9	18	34	30	9.8	26	3.3	1	38	31
GN.78232	GN 114.2-10-35	10	11.7 +1	9.9	18	34	35	9.8	26	3.3	1	38	33
GN.38737	GN 114.2-10-40	10	11.7 +1	9.9	18	34	40	9.8	26	3.3	1	38	35
GN.78233	GN 114.2-10-45	10	11.7 +1	9.9	18	34	45	9.8	26	3.3	1	38	37
GN.38739	GN 114.2-10-50	10	11.7 +1	9.9	18	34	50	9.8	26	3.3	1	38	39
GN.78234	GN 114.2-10-60	10	11.7 +1	9.9	18	34	60	9.8	26	3.3	1	38	44
GN.78235	GN 114.2-10-70	10	11.7 +1	9.9	18	34	70	9.8	26	3.3	1	38	49
GN.78236	GN 114.2-10-80	10	11.7 +1	9.9	18	34	80	9.8	26	3.3	1	38	54
GN.78237	GN 114.2-10-90	10	11.7 +1	9.9	18	34	90	9.8	26	3.3	1	38	60
GN.78238	GN 114.2-10-100	10	11.7 +1	9.9	18	34	100	9.8	26	3.3	1	38	63
GN.78239	GN 114.2-10-110	10	11.7 +1	9.9	18	34	110	9.8	26	3.3	1	38	67
GN.78240	GN 114.2-10-120	10	11.7 +1	9.9	18	34	120	9.8	26	3.3	1	38	73
GN.78251	GN 114.2-12-20	12	13.7 +1	11.9	18	34	20	11.3	26	3.8	1	61	33
GN.38741	GN 114.2-12-25	12	13.7 +1	11.9	18	34	25	11.3	26	3.8	1	61	37
GN.38743	GN 114.2-12-30	12	13.7 +1	11.9	18	34	30	11.3	26	3.8	1	61	41
GN.78252	GN 114.2-12-35	12	13.7 +1	11.9	18	34	35	11.3	26	3.8	1	61	44
GN.38745	GN 114.2-12-40	12	13.7 +1	11.9	18	34	40	11.3	26	3.8	1	61	48
GN.78253	GN 114.2-12-45	12	13.7 +1	11.9	18	34	45	11.3	26	3.8	1	61	51
GN.38747	GN 114.2-12-50	12	13.7 +1	11.9	18	34	50	11.3	26	3.8	1	61	55
GN.38749	GN 114.2-12-60	12	13.7 +1	11.9	18	34	60	11.3	26	3.8	1	61	62
GN.78254	GN 114.2-12-70	12	13.7 +1	11.9	18	34	70	11.3	26	3.8	1	61	69
GN.78255	GN 114.2-12-80	12	13.7 +1	11.9	18	34	80	11.3	26	3.8	1	61	76
GN.78256	GN 114.2-12-90	12	13.7 +1	11.9	18	34	90	11.3	26	3.8	1	61	90
GN.78257	GN 114.2-12-100	12	13.7 +1	11.9	18	34	100	11.3	26	3.8	1	61	95
GN.78258	GN 114.2-12-110	12	13.7 +1	11.9	18	34	110	11.3	26	3.8	1	61	102
GN.78259	GN 114.2-12-120	12	13.7 +1	11.9	18	34	120	11.3	26	3.8	1	61	112
GN.38790	GN 114.2-16-30	16	18.7 +1	15.9	22	40	30	14.2	32	4.8	1.2	113	78
GN.38791	GN 114.2-16-35	16	18.7 +1	15.9	22	40	35	14.2	32	4.8	1.2	113	85
GN.78271	GN 114.2-16-40	16	18.7 +1	15.9	22	40	40	14.2	32	4.8	1.2	113	92
GN.78272	GN 114.2-16-45	16	18.7 +1	15.9	22	40	45	14.2	32	4.8	1.2	113	85
GN.38792	GN 114.2-16-50	16	18.7 +1	15.9	22	40	50	14.2	32	4.8	1.2	113	104
GN.38793	GN 114.2-16-60	16	18.7 +1	15.9	22	40	60	14.2	32	4.8	1.2	113	118
GN.38794	GN 114.2-16-70	16	18.7 +1	15.9	22	40	70	14.2	32	4.8	1.2	113	133
GN.78273	GN 114.2-16-80	16	18.7 +1	15.9	22	40	80	14.2	32	4.8	1.2	113	144
GN.78274	GN 114.2-16-90	16	18.7 +1	15.9	22	40	90	14.2	32	4.8	1.2	113	147
GN.78275	GN 114.2-16-100	16	18.7 +1	15.9	22	40	100	14.2	32	4.8	1.2	113	173
GN.78276	GN 114.2-16-110	16	18.7 +1	15.9	22	40	110	14.2	32	4.8	1.2	113	186
GN.78277	GN 114.2-16-120	16	18.7 +1	15.9	22	40	120	14.2	32	4.8	1.2	113	199
GN.78278	GN 114.2-16-130	16	18.7 +1	15.9	22	40	130	14.2	32	4.8	1.2	113	213
GN.78279	GN 114.2-16-140	16	18.7 +1	15.9	22	40	140	14.2	32	4.8	1.2	113	226
GN.78280	GN 114.2-16-150	16	18.7 +1	15.9	22	40	150	14.2	32	4.8	1.2	113	239



- 1
- 2
- 3
- 4
- 5
- 6
- 7
- 8**
- 9
- 10
- 11
- 12
- 13
- 14
- 15
- 16
- 17
- 18
- 19



Code	Description	d1 -0.1	d2	d3	d4	d5	l1 +0.4	l2	l3	a	b	Résistance au cisaillement [KN]	
GN.38941	GN 114.2-20-30	20	22.7 +1	19.8	22	40	30	14.8	33	4.8	1.2	187	125
GN.38942	GN 114.2-20-35	20	22.7 +1	19.8	22	40	35	14.8	33	4.8	1.2	187	136
GN.38943	GN 114.2-20-40	20	22.7 +1	19.8	22	40	40	14.8	33	4.8	1.2	187	147
GN.78291	GN 114.2-20-45	20	22.7 +1	19.8	22	40	45	14.8	33	4.8	1.2	187	158
GN.38944	GN 114.2-20-50	20	22.7 +1	19.8	22	40	50	14.8	33	4.8	1.2	187	169
GN.38945	GN 114.2-20-60	20	22.7 +1	19.8	22	40	60	14.8	33	4.8	1.2	187	191
GN.38946	GN 114.2-20-70	20	22.7 +1	19.8	22	40	70	14.8	33	4.8	1.2	187	214
GN.38947	GN 114.2-20-80	20	22.7 +1	19.8	22	40	80	14.8	33	4.8	1.2	187	234
GN.78292	GN 114.2-20-90	20	22.7 +1	19.8	22	40	90	14.8	33	4.8	1.2	187	258
GN.78293	GN 114.2-20-100	20	22.7 +1	19.8	22	40	100	14.8	33	4.8	1.2	187	277
GN.78294	GN 114.2-20-110	20	22.7 +1	19.8	22	40	110	14.8	33	4.8	1.2	187	302
GN.78295	GN 114.2-20-120	20	22.7 +1	19.8	22	40	120	14.8	33	4.8	1.2	187	326
GN.78296	GN 114.2-20-130	20	22.7 +1	19.8	22	40	130	14.8	33	4.8	1.2	187	350
GN.78297	GN 114.2-20-140	20	22.7 +1	19.8	22	40	140	14.8	33	4.8	1.2	187	368
GN.78298	GN 114.2-20-150	20	22.7 +1	19.8	22	40	150	14.8	33	4.8	1.2	187	395

Éléments d'indexage